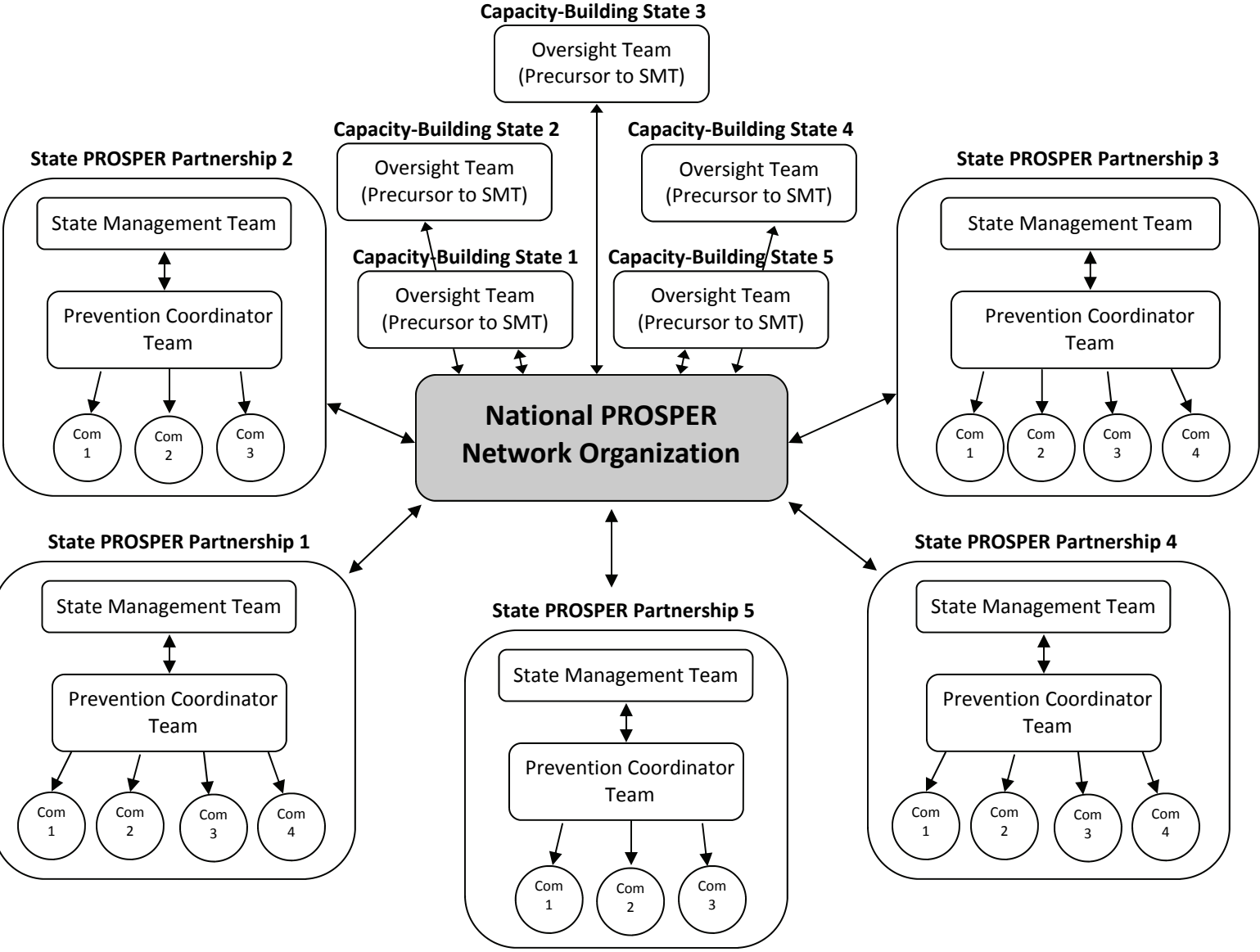
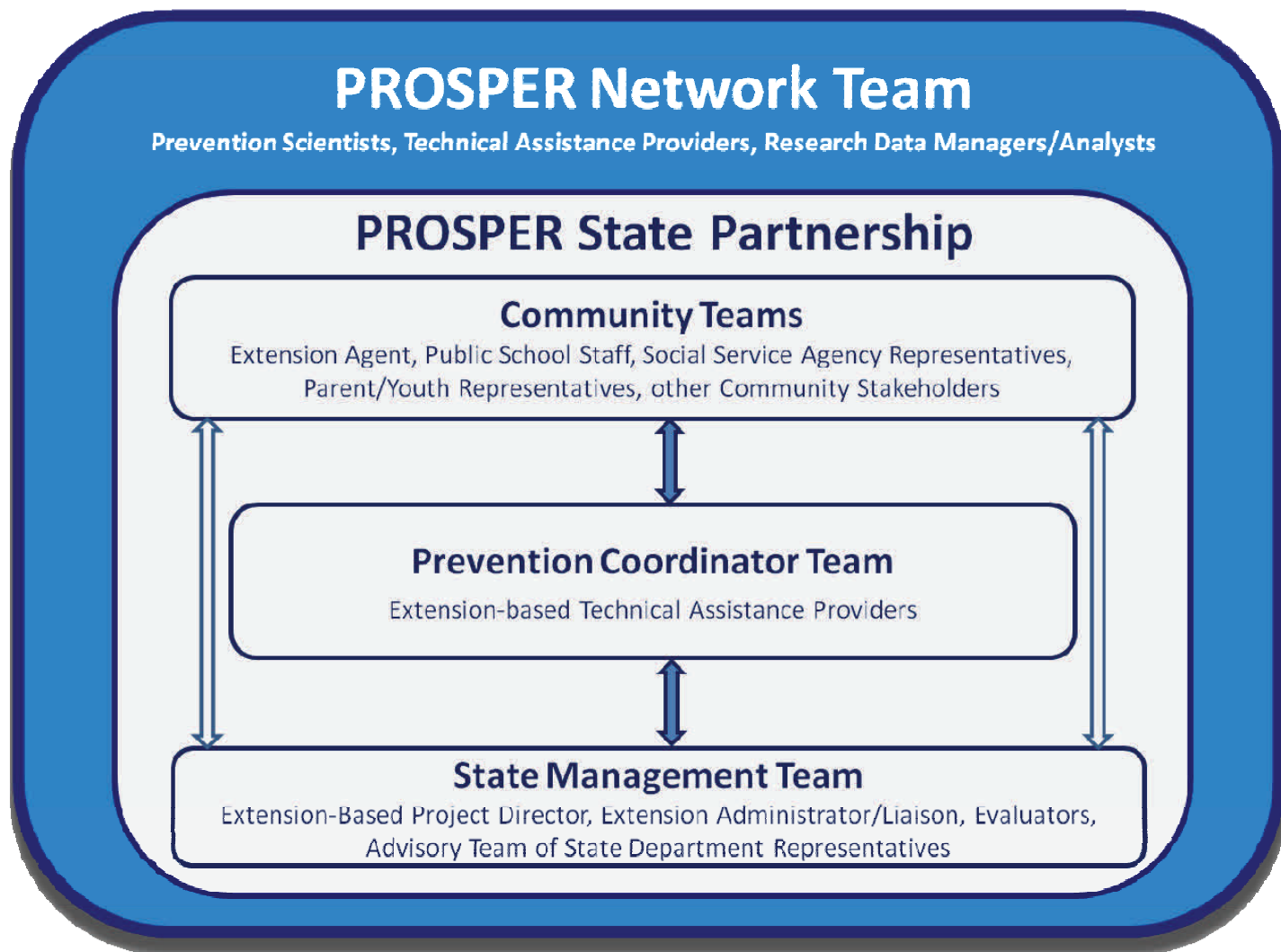


National Network Organization Diagram Representing Five Capacity-Building States and Five Implementation States



This Figure Represents the Four-Tiered PROSPER Model Showing the Three Teams (in white) that Make up the State Partnership and the Network Team (in blue) that Provides Ongoing Training and Technical Assistance



Note. Open arrows represent less frequent, indirect communication, solid blue arrows represent regular, direct communication