



achieve

inspire

teach

connect

dream

Core Program Model

On-going definitions, clarity and messaging

July 19, 2011



What is the 'Core Program Model'?

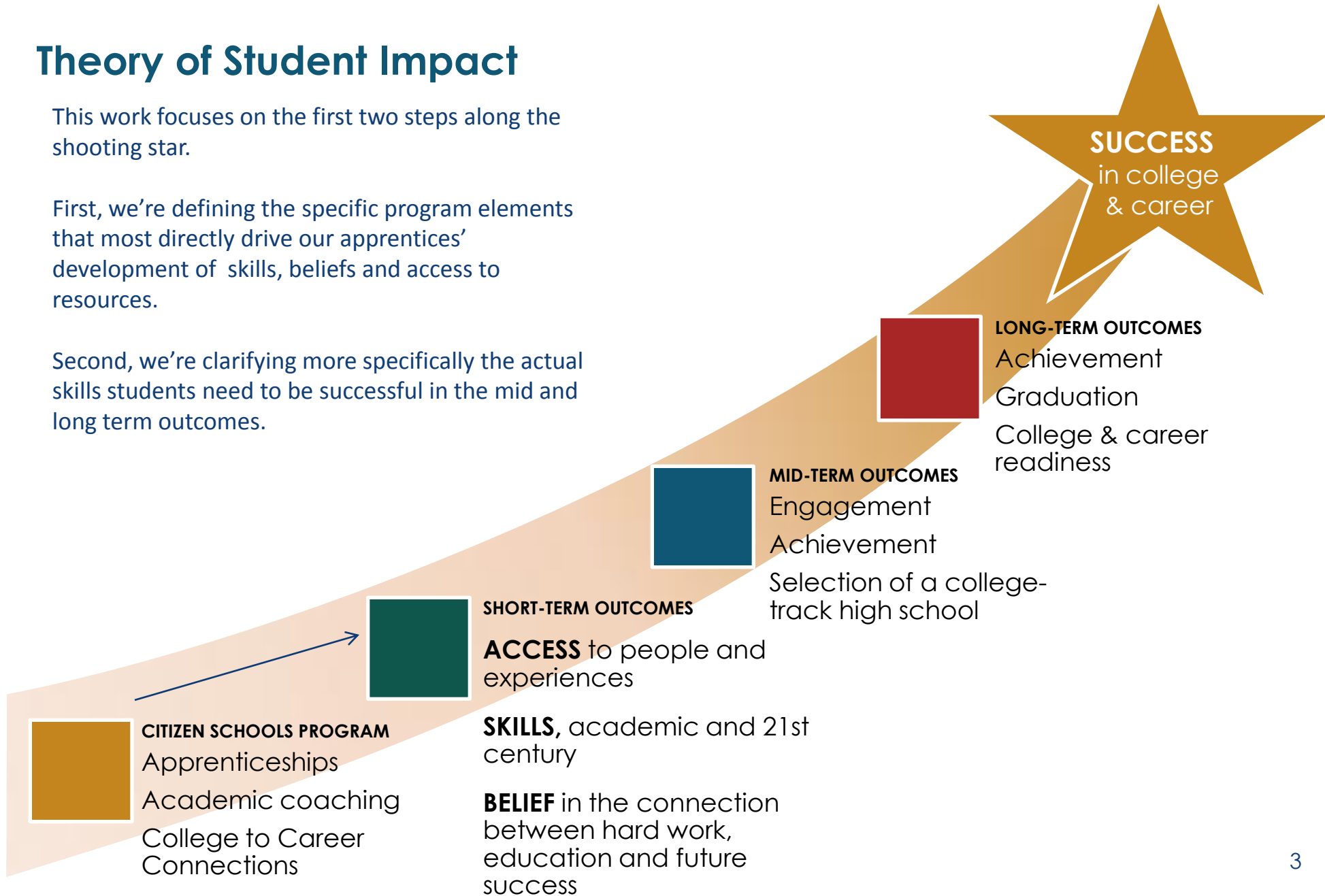
- The shared, national definition of the standard, required program elements and supporting curricula to be utilized.
- Codification of our existing elements, with on-going refinement and adjustments, including required/recommended/suggested details
- Includes:
 - Dosage
 - Baseline length of the program year
 - Baseline time for each element per week and school year
 - Standards, objectives and outcomes for each element
 - General structure of each element 'block'
 - Supporting curricula and resources to be used for each element 'block'
 - Guidelines for negotiations/differences at the regional level

Theory of Student Impact

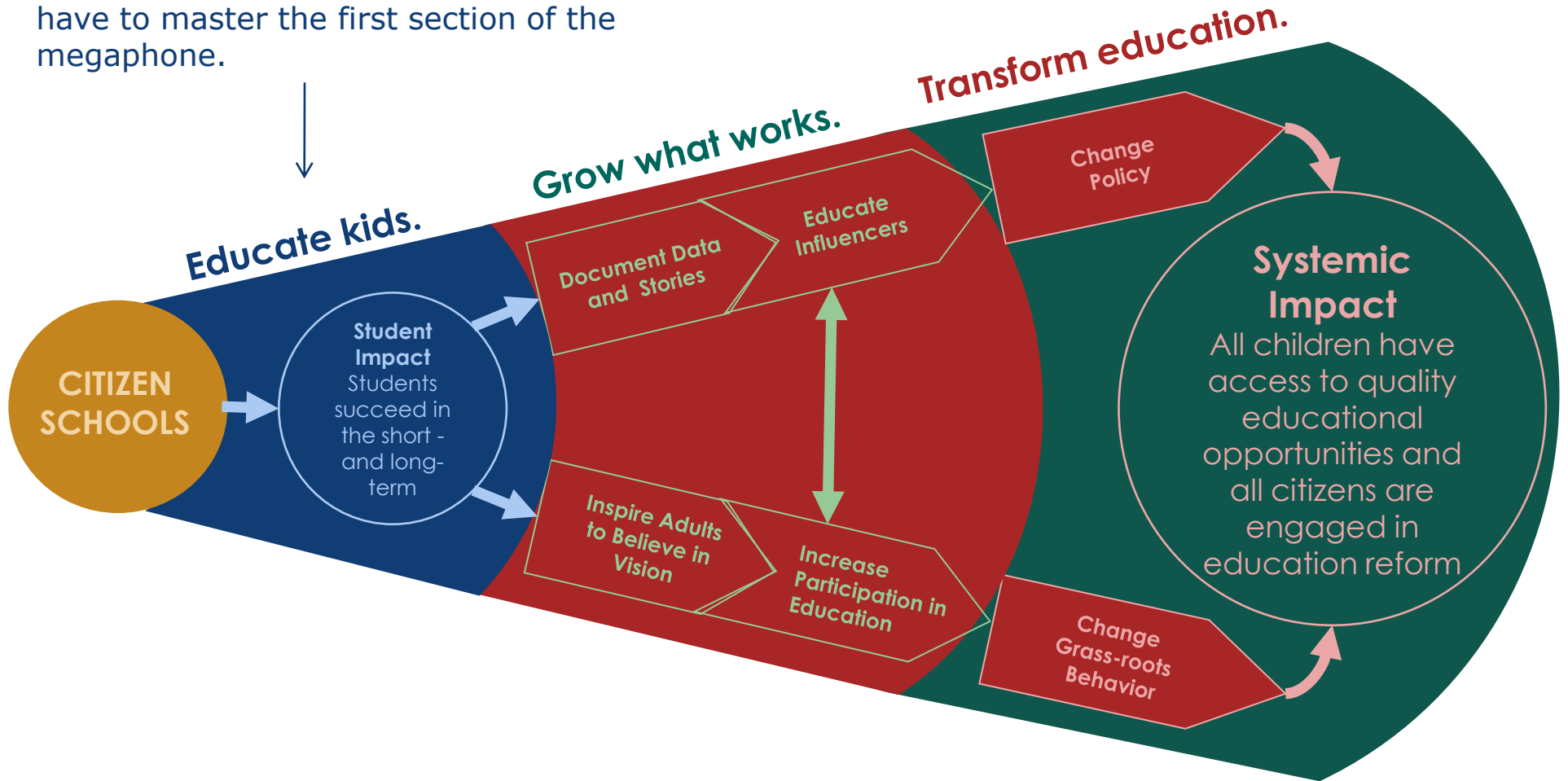
This work focuses on the first two steps along the shooting star.

First, we're defining the specific program elements that most directly drive our apprentices' development of skills, beliefs and access to resources.

Second, we're clarifying more specifically the actual skills students need to be successful in the mid and long term outcomes.

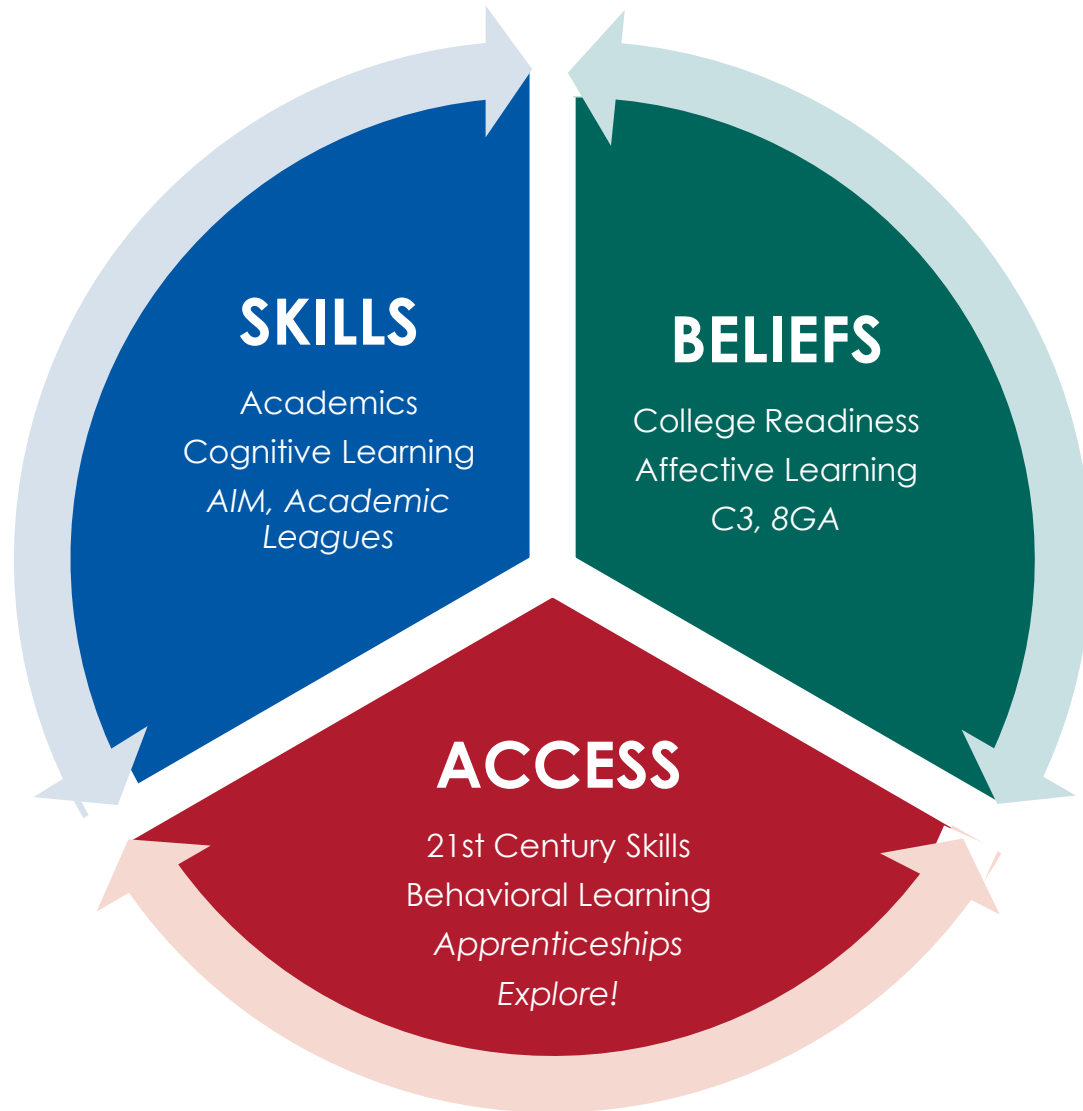


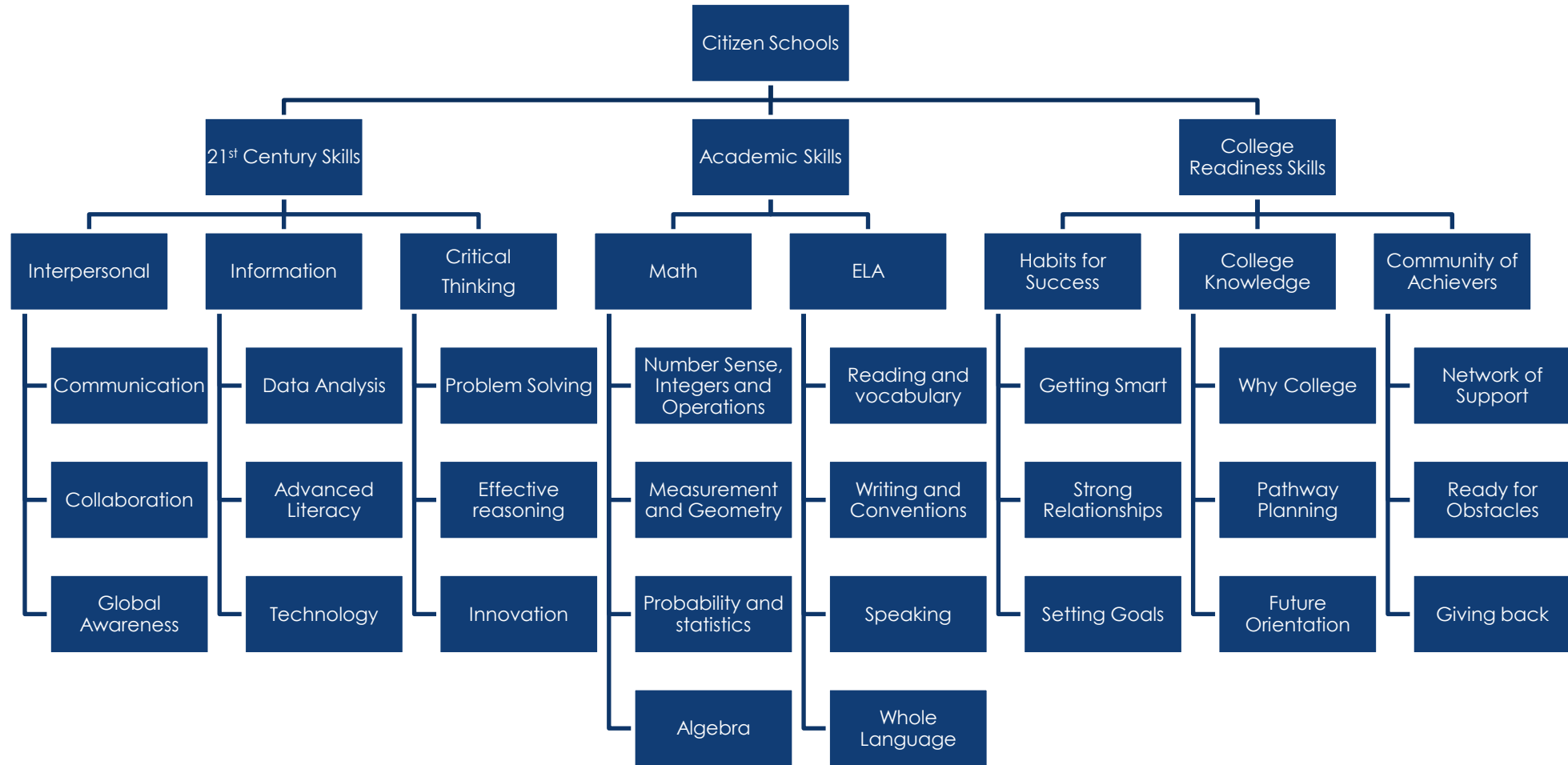
To be able to effect broader education reform, we have to master the first section of the megaphone.



- **Make Sure We Get There:** A common model ensures focus and alignment of all organizational efforts to achieving our shooting star. It clarifies what we do and how we do it. It allows us to align all partners, parties, and actors around one shared vision of our work.
- **To Prove More Time Work:** In order to be an impactful education reform organization, we need to prove our model and we have to be able to evaluate what we actually do when students are with us.
- **To Work Together Better:** Enables us to work smarter, retain staff and focus on continual improvement. Drives development of national tools, training & support . Ensures staff use time efficiently and on the highest leverage and most effective activities

1. Learning activities align to core academic skills and bridge content and 21st century skills.
2. Explicit teaching of school navigation, student success skills and college knowledge.
3. Intentional & relevant learning experiences sequenced to achieve objectives related to content & skill development.
4. Explicit alignment with school academic priority area(s) and academic standards.
5. Learning experiences maximize student engagement through various methods of application & reinforcement, including project/problem-based learning and novel approaches to learning.
6. Learning experiences leverage peer relationships and sense of team in focusing on academic and life success.
7. Focus on & responsive to individual and collective student needs as driven by data.
8. Learning activities conclude with intentional reflection or debrief which connects activity to student learning and progress.
9. A culture of achievement is a binding element that maximizes our success in all program elements.
10. Joy and engagement are woven into all parts of program.





School Day

| MONDAY | TUESDAY | WEDNESDAY | THURSDAY | FRIDAY |
|--|--|---|--|---|
| Snack and Circle (20 min.) | SNACK (10) | SNACK (10) | SNACK (10) | Reserved for Citizen Schools Staff Development |
| Academic Support Block 100 min | Academic Support Block 80 min | Academic Support Block * 110 min | Academic Support Block 80 min | |
| College to Career Connections (incl 8GA) 60 min | Apprenticeships OR Interession Programming 90 min | EXPLORE!: Choice, Explorations and Team (60 min) | Apprenticeships OR Interession Programming 90 min | |
| Dismissal | Dismissal | Dismissal | Dismissal | |

- 32 weeks
- 4 days per week
- 3 hours per day
- Divided into 2 semesters (minimum of 13 weeks each)
- Run core model all weeks (fill non-aship blocks with 21st century skills programming)
- 12-13 week apprenticeship cycle (fair, 10 weeks, WOW!, reflection)
- 1 week of Launch Weekin fall

| Element | Programming | Network Requirements | Nationally Developed Materials/Support |
|--------------------------|--|--|--|
| ASB – total 5 hours | AIM (daily) | <ul style="list-style-type: none"> •60-240 minutes weekly (reciprocates Academic League) •Choice of approved options for what to do when students are finished w/ homework | <ul style="list-style-type: none"> •Vision of Excellence |
| | Academic League (weekly) | <ul style="list-style-type: none"> •60 to 240 minutes weekly (reciprocates AIM) •Pre-developed S&S •Use provided units/lessons | <ul style="list-style-type: none"> •Standards aligned units and lessons – all revised (total 9 literacy, 9 math), closer to 10 lessons each •S&S process - revised •Internalization process – revised •Adaptation process •Vision of Excellence |
| C3 – total 1-2.5 hours | C3- 6 th & 7 th Grade (weekly) | <ul style="list-style-type: none"> •60 minutes/week •Use provided units lessons | <ul style="list-style-type: none"> •Vision of Excellence •3 units- 10 lesson each •Revised standards, units, objectives •All unit and lesson provided •Internalization process – revised |
| | C3-8GA (2x per week) | <ul style="list-style-type: none"> •60 minutes/week lesson •90 minutes/week apprenticeship •Use provided units/lessons | |
| Explore! – no set timing | Explorations | <ul style="list-style-type: none"> •1x/month •Rotation with choice time and team time •1 college trip (some regional career event requirements) | <ul style="list-style-type: none"> •Visions of Excellence •Guidelines and objectives •Best practices |
| | Choice Time | <ul style="list-style-type: none"> •Rotation with Explorations and Team Time | |
| | Team Time | <ul style="list-style-type: none"> •Rotation with Explorations and Choice Time | |

| Element | Network Requirements | Nationally Developed Materials/Support |
|---------------------------------|--|---|
| Apprenticeships – total 180 min | <ul style="list-style-type: none"> • 2x per week – 90 min each • Unit guide (10 week plan and weekly lesson plans) | <ul style="list-style-type: none"> • Revised 21st century skills • Vision of Excellence • 15 star curricula • Templates, CT nation |
| Circle | <ul style="list-style-type: none"> • 1x per week | <ul style="list-style-type: none"> • Visions of Excellence |
| Snack - daily | <ul style="list-style-type: none"> • None | <ul style="list-style-type: none"> • Vision of excellence |
| Grades and Goals | <ul style="list-style-type: none"> • 1x/month | <ul style="list-style-type: none"> • Overview of process • Documents for use • Options for integration |
| Launch Week | <ul style="list-style-type: none"> • 1 week • Overview of content | <ul style="list-style-type: none"> • Overview • Recommended Lesson Plans |
| Intersession | <ul style="list-style-type: none"> • Continue running C3 and AL • 21st century skills as standards and objectives | <ul style="list-style-type: none"> • Overview • Sample Lesson Plans |
| Family Events | <ul style="list-style-type: none"> • none | |

- Clarity on CPM requirements, recommendations, suggestions
- Revised Standards/Objectives for AL, C3, Apprenticeships
- Revised unit structure for C3
- Visions of excellence for snack, circle, GAGs and events