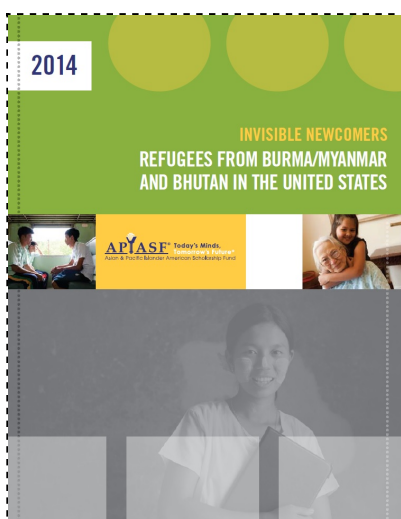


January 2014 eNews

APIASF & AAAS Publish Report on Refugees from Burma/Myanmar and Bhutan in the U.S.

APIASF held a press event on Capitol Hill last week to discuss a newly published report, written in conjunction with the Association for Asian American Studies, titled [*Invisible Newcomers: Refugees from Burma/Myanmar and Bhutan in the United States*](#).



This ground-breaking report gives voice to and provides comprehensive data about the demographics, challenges and policy implications surrounding refugee populations from Burma/Myanmar and Bhutan.

"The impetus for releasing this critically important report was through continual assessment of APIASF's scholarship application cycle," said Neil Horikoshi, APIASF President & Executive Director. "We discovered that a growing number of APIASF applicants

and scholarship recipients came from the Burmese and Bhutanese communities. Further investigation into these groups demonstrated the need for access to educational resources as well as additional research to inform policymakers, higher education leaders and other resource providers about the experiences of students."

Since the release, APIASF has drawn interest from the press, resulting in pieces by [Diverse Issues in Higher Education](#), [Scripps Howard Foundation Wire](#) and [Voice of America](#) (Burmese language) highlighting Burmese and Bhutanese refugees.

For more information about this report, [click here](#). To see this report and others, please visit our [Research page](#).

Volunteer Opportunity: Become a Reader for the APIASF Scholarship Program!

APIASF is still seeking volunteers to serve as readers for its general Scholarship Program! Readers assist in the evaluation of applications submitted for the 2014-2015 academic year and are critical to APIASF's ability to award scholarships to students.

DONATE TODAY!



Scholar Profile



"My school is proud that I represent my community and the school well. I believe that it is important for Asian American and Pacific Islander students to pursue higher education because we are all believers and aim to pursue our ultimate dream."

Alan Nguyen
2013 APIASF / Toyota
Scholar

Attending
University of California -
Irvine
in Mathematics and
Education

The scholarship review process has already begun and will continue until March 14, 2014. Readers will have access to a secure website to review scholarship applications. To ensure that there are enough readers to evaluate all applications, readers are asked to commit to completing a minimum of 40 applications. Each application takes approximately 10-15 minutes to review. Readers who review applications on a consistent basis will be entered into drawings to win prizes throughout the read.

All readers must have an undergraduate college diploma and/or 7-10 years of work experience. All volunteers, new and returning, are required to review a training presentation online. The training will cover basic information related to education in the Asian American, Native Hawaiian and Pacific Islander communities and provide an overview of the review and scoring process.

If you are interested in volunteering as a reader for the APIASF Scholarship Program, please complete the [new reader registration form](#). If you are a returning reader, simply log in to your account at the top of the [registration page](#).

For more information, please contact Cecilia Marshall, Director, APIASF Scholarship Program, at cmarshall@apiasf.org or 202-747-7235.

APIASF Participates in MSI Center Launch at the University of Pennsylvania

After years of building connections and conducting research on how minority-serving institutions (MSIs) serve a niche market and overcome barriers to access in higher education, Marybeth Gasman, a historian and professor in the University of Pennsylvania's Graduate School of Education and new MSI Center Director, held a launch event to open the school's new [Center for Minority-Serving Institutions](#).

"I hope that we will change the nation's view of MSIs," Gasman said. "I want people to see them as nuanced and important to America's higher education. I also hope the Center will encourage more young scholars, especially scholars of color, to do work related to MSIs and low-income students of color."

The Center opened with an event featuring presentations from MSI leaders followed by a reception. APIASF Campus Engagement Manager, Kalindi Doshi, presented alongside representatives from the American Indian College Fund and the United Negro College Fund.

AANAPISI Profile: South Seattle Community College

South Seattle Community College in Seattle, Washington was designated in 2008 as an Asian American and Native American Pacific Islander-Serving Institution (AANAPISI), the U.S. Department of Education grant program designed to improve retention, transfer and graduation rates of underserved Asian American and Pacific Islander (AAPI) students. This initiative contributes to South Seattle Community College's efforts of achieving high student success rates among high rates of student

Volunteer Profile



"When I was reading these [APIASF Scholarship] applications, I was constantly moved by the applicants' determination and hope to get higher education to change their lives and give back to their families and communities."

Jian Liu
APIASF Volunteer and
Environmental Engineer
at Southern California
Edison

To volunteer with
APIASF, [click here](#).

Quick Links

[APIASF.org](#)

[Events](#)

diversity, since AAPI students make up the school's largest group of students of color.



South Seattle Community College uses their AANAPISI funds for a two-pronged approach to AAPI inclusion. The first component provides services to retain AAPI students through culturally appropriate advising, educational planning, individual advising portfolios and enhanced learner orientations. The second component focuses on a culturally responsive learning environment by providing an AANAPISI Center for students, cultural role models, cohort-based study groups, and culturally relevant course content and professional development.

For more information on South Seattle Community College's AANAPISI programs, please click [here](#).

South Seattle Community College is one of nine AANAPISIs partnered with APIASF through the [APIASF AANAPISI Scholarship Program](#), which distributes awards from \$2,500-\$5,000 to AAPI students at participating institutions.

Share the #repLove with the APIASF Blog this February

This February, we'll be exploring the theme of love (#repLove) and how it is expressed in our lives. From the love you may have towards your family to the dedication you have for your passions, love is all around. Throughout the month, we will share guiding prompts that focus on love for yourself, love for your community, and love for the world around you. Follow along throughout the month to see and share the many ways love is revealed in our lives.



You can join and follow the conversation [here](#). To read January's posts regarding the importance and meaning of service (#repService), [click here](#).

[Meet our Scholars](#)

[Scholarships](#)

[Translated Material](#)

[Student Resource Center](#)

[PEER Project](#)

[Research and Reports](#)

[APIASF in the News](#)

[Donate Now](#)

AN INDEX OF TOP NONPROFITS

S&I100

CREATING SOCIAL IMPACT

The Asian & Pacific Islander American Scholarship Fund is proud to be recognized in the Social Impact Exchange's S&I 100 Index of Top Nonprofits Creating Social Impact. Learn more by [clicking here](#).

[Forward email](#)

 SafeUnsubscribe™



Try it FREE today.

This email was sent to ktranlam@apiasf.org by info@apiasf.org | [Update Profile/Email Address](#) | Instant removal with [SafeUnsubscribe™](#) | [Privacy Policy](#).

Asian & Pacific Islander American Scholarship Fund | 2025 M Street NW | Suite 610 | Washington | DC | 20036